

PART OF THE NW.1.4, OF SECTION 20 & PART OF THE NE.1/4, OF SECTION 19, T.7N., R.1E., S.L.B. & M.

WARD ACRES SUBDIVISION PHASE 3

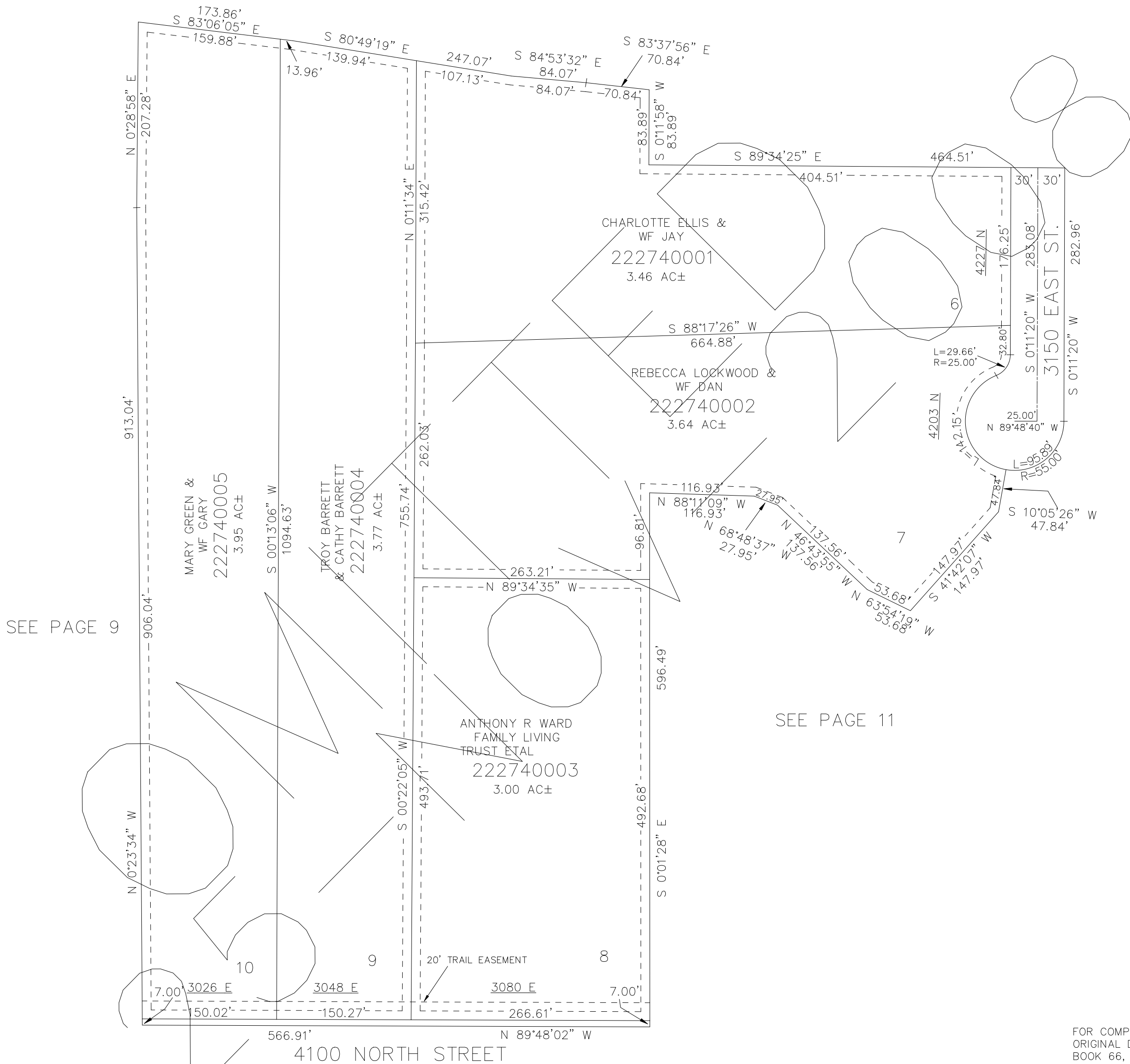
IN WEBER COUNTY

TAXING UNIT: 36

SCALE 1" = 100'

SEE PAGE 9

SEE PAGE 11



SEE PAGE 9

SEE PAGE 11

10' UTILITY & DRAINAGE EASEMENTS EACH SIDE OF PROPERTY LINES AS INDICATED BY DASHED LINES EXCEPT AS OTHERWISE SHOWN.

FOR COMPLETE ENG DATA SEE ORIGINAL DEDICATION PLAT IN BOOK 66, PAGE 48 OF RECORDS.